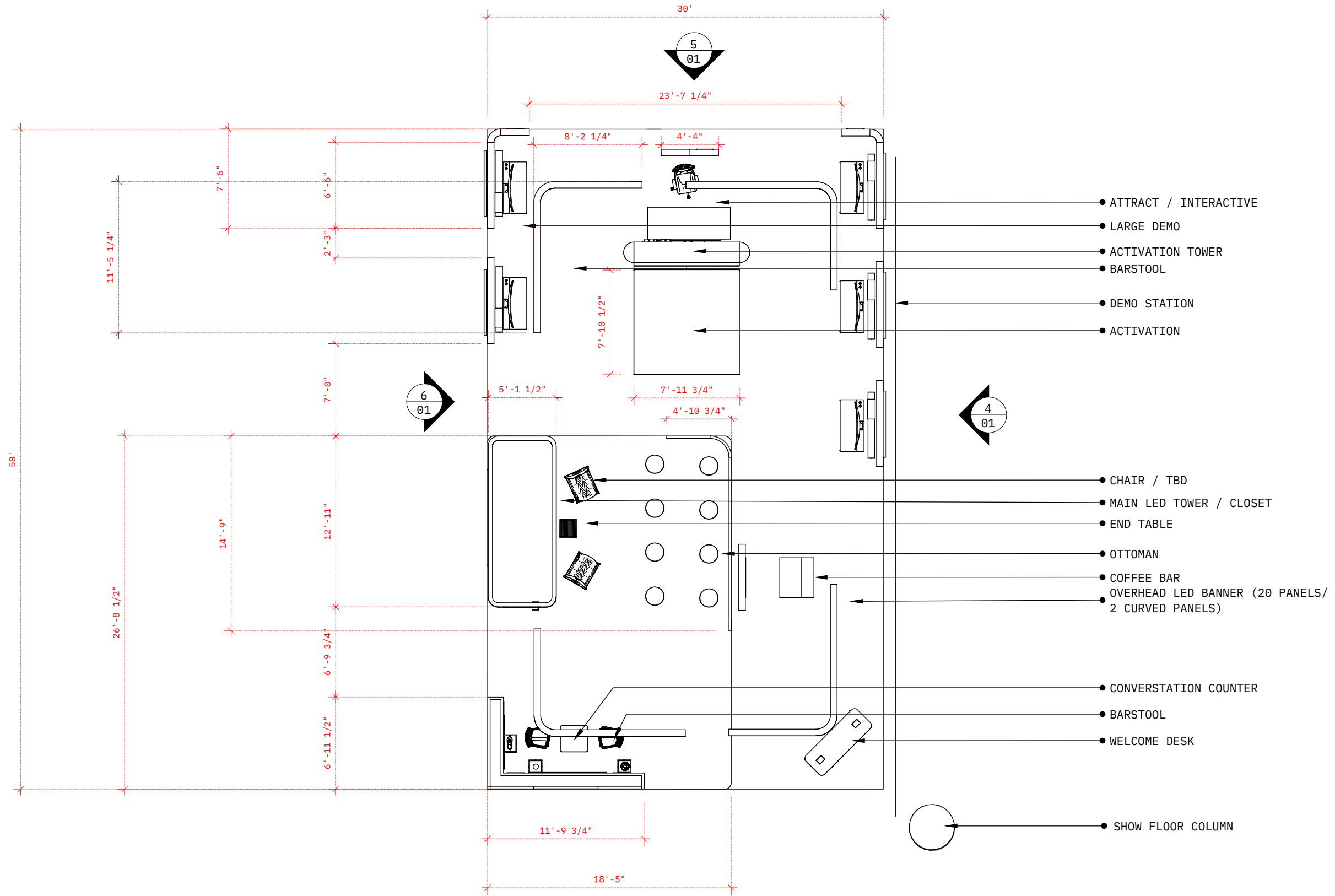




IBM | RSA | 2023

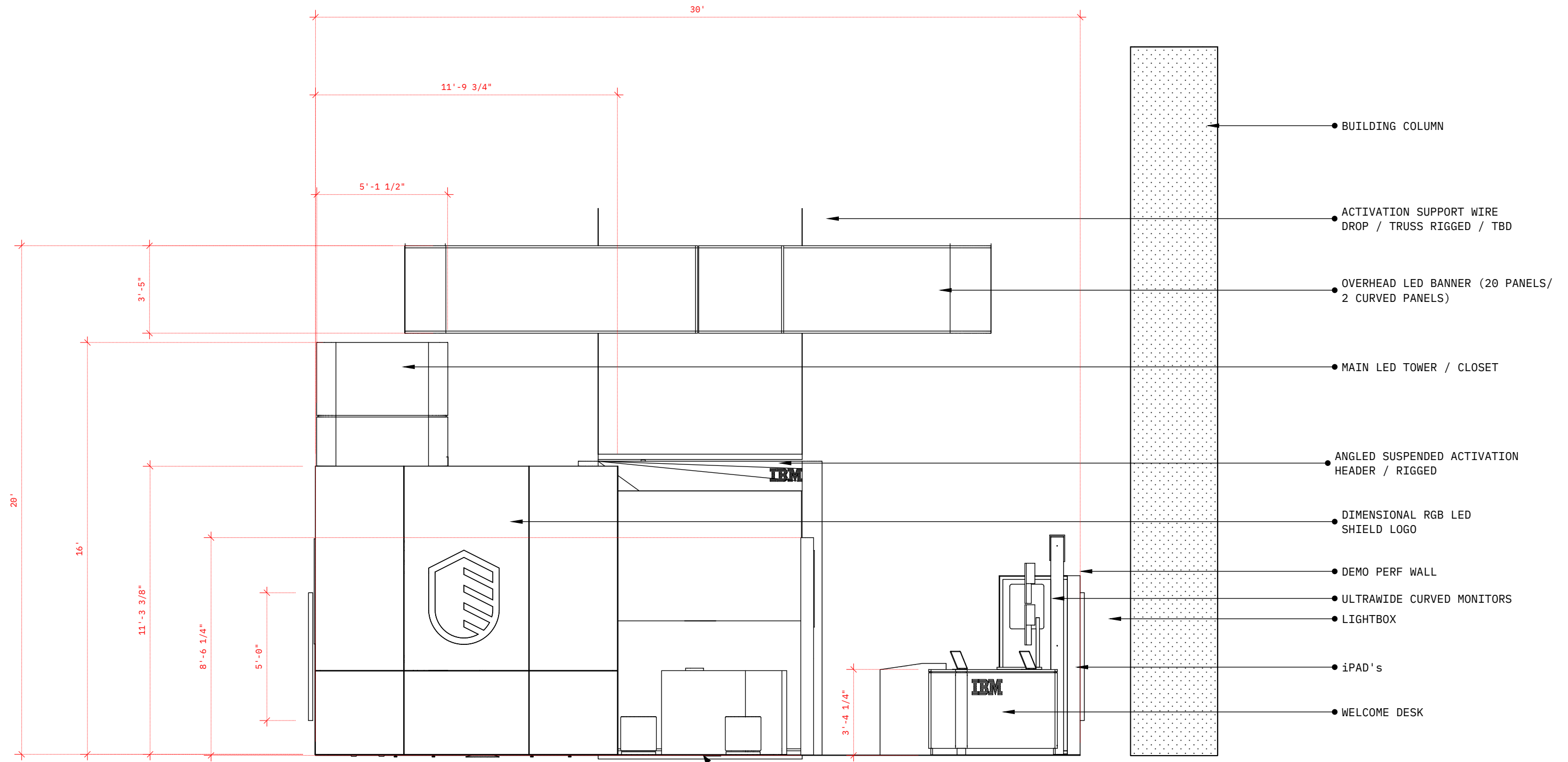




1

WHITE MODEL | PLAN

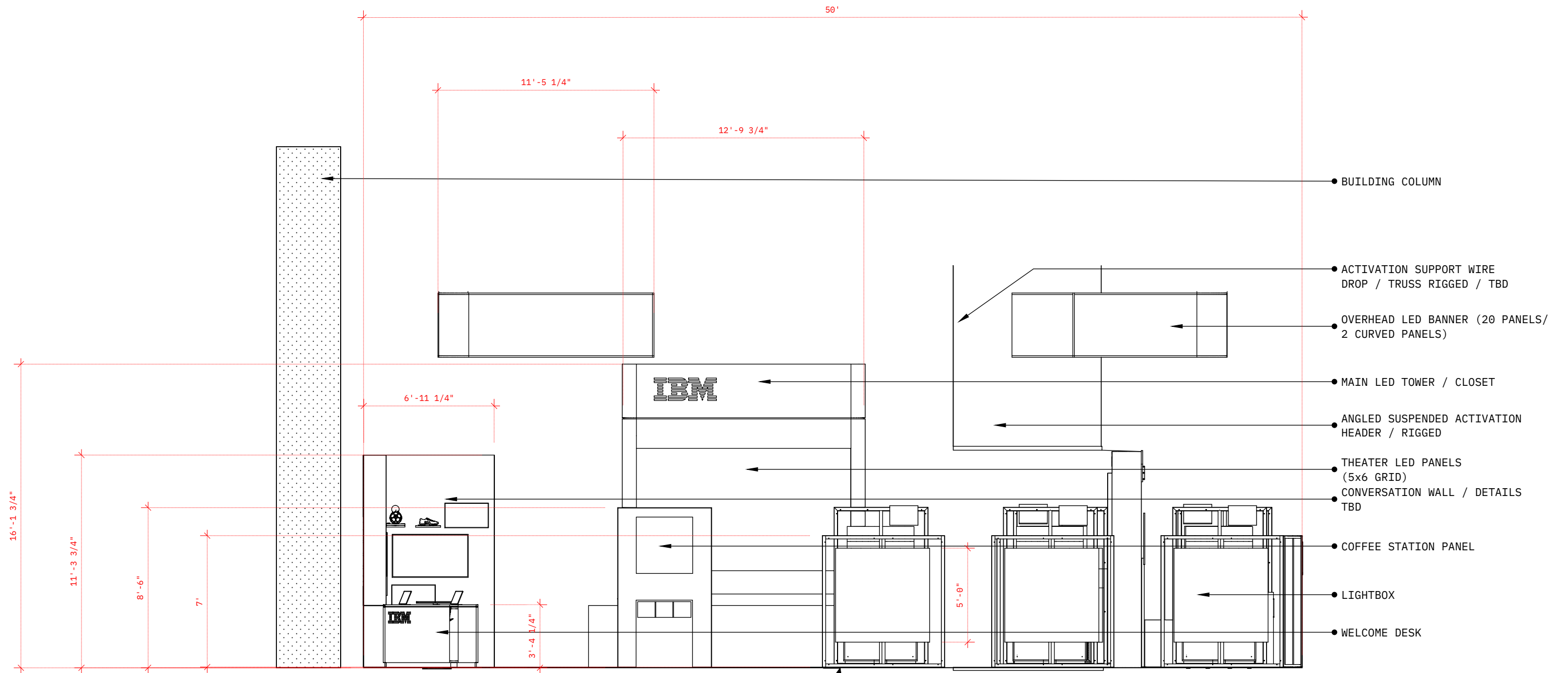
Scale : 1/8" = 1'-0" | (1:96)



3

WHITE MODEL | FRONT

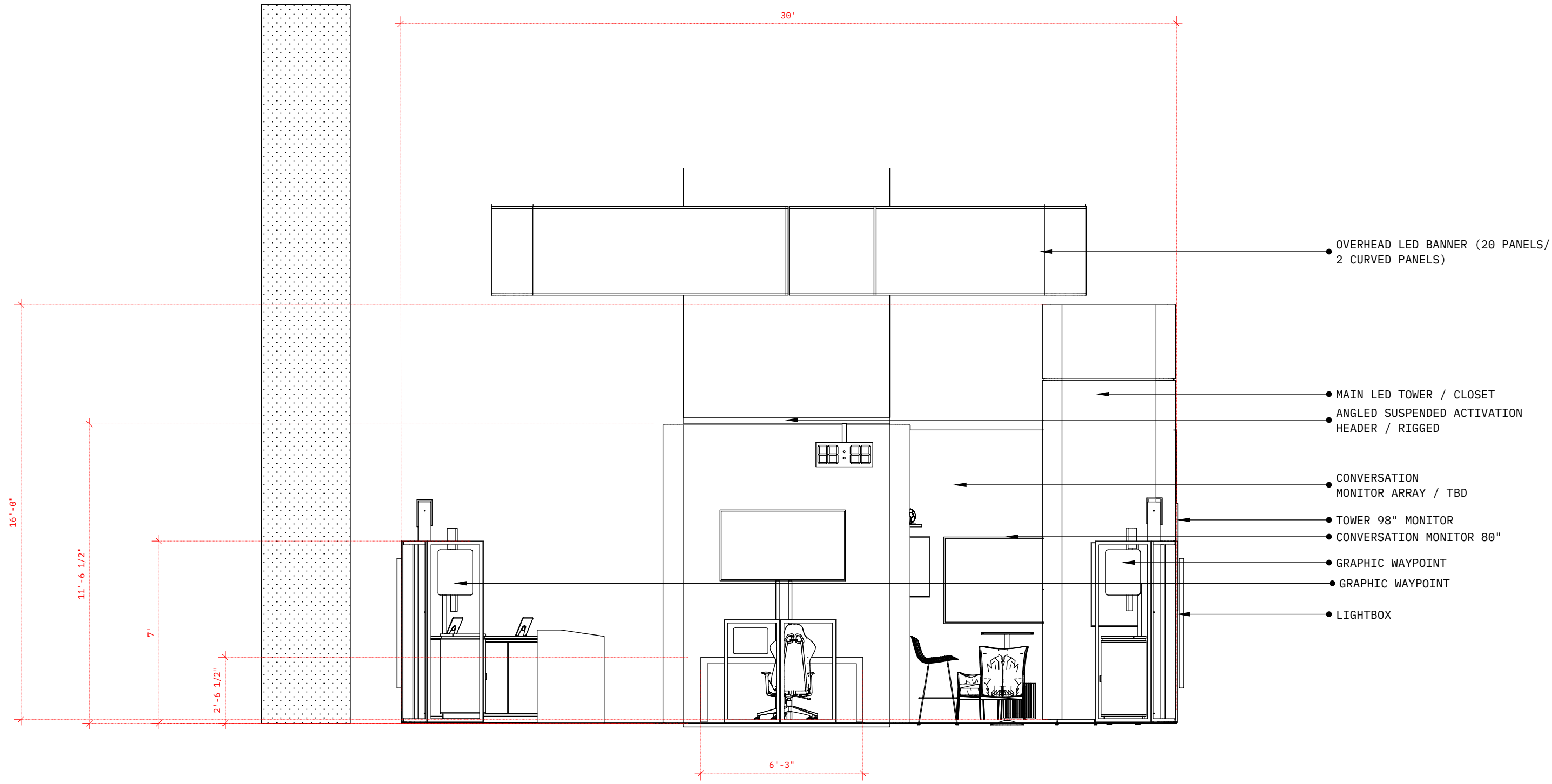
Scale : 1/4" = 1'-0" | (1:48)



4

WHITE MODEL | RIGHT

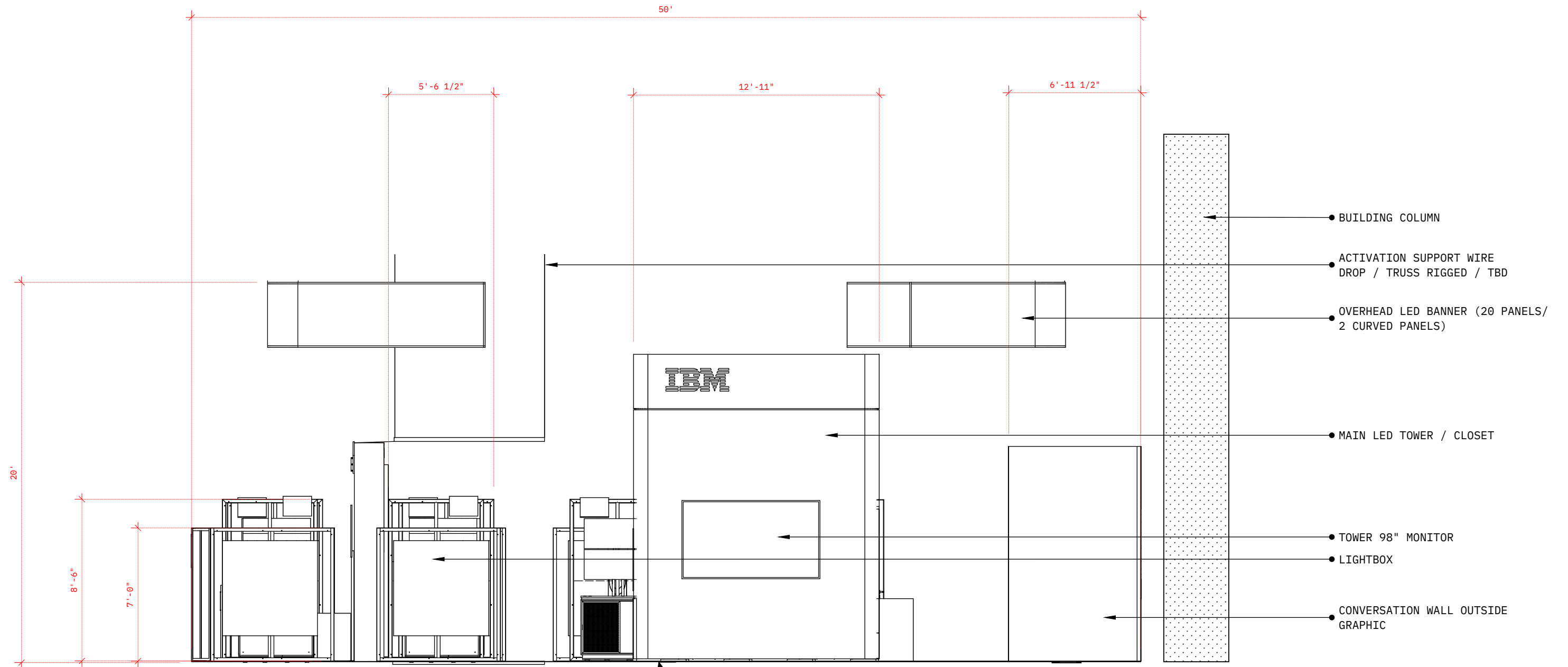
Scale : 3/16" = 1'-0" | (1:64)



5

WHITE MODEL | BACK

Scale : 1/4" = 1'-0" | (1:48)



6

WHITE MODEL | LEFT  
 Scale : 3/16" = 1'-0" | (1:64)



#### PLAYBOOK ITEMS | NEW CONSTRUCTION

6 x DEMO WALLS | 5'W x 8'-6"H | PERF CIRCULAR METAL | RGB INTERIOR LIGHTING  
 5 x DEMO WALLS HEADERS | SIZE TDB PER NASHVILLE  
 5 x DEMO PED STRUCTURES | DETAIL PER NASHVILLE

5 x EXTERIOR WALLS | 6'-6"W x 7'H | PERF SQUARE METAL | BRONZE FINISH  
 2 x EXTERIOR HALF WALLS | 2'-2"W x 7'H | PERF SQUARE METAL | BRONZE FINISH  
 2 x EXTERIOR CURVE WALLS | 1' RAD. x 7'H | PERF SQUARE METAL | BRONZE FINISH  
 2 x EXTERIOR SHORT WALLS | 2'-2" x 4'H | PERF SQUARE METAL | BRONZE FINISH

5 x LIGHTBOX | 5' x 5'

1 x GAME TABLE | 2'-6"W x 6'-3"H | KENSINGTON FINISH | BLACK VINYL TOP  
 5 x EXTERIOR CURVE WALLS | 1' RAD. x 7'H | PERF SQUARE METAL | BRONZE FINISH

1 x WELCOME COUNTER | 5'-6"W x 2'D x 3'-4"H

1 x LED TOWER | 4 x 7 LED GRID | 28 LED PANELS TOTAL | [SEE NASHVILLE DEATILS](#)

1 x ACTIVATION | UNKNOWN LED COUNT | [SEE NASHVILLE DEATILS](#)

#### SIGNS

1 x SIGN | 3' x 3'  
 2 x SIGN | 1'-4"W x 1'-9"H  
 1 x SIGN | 1'-4"W x 1'H

#### ALUVISION SYSTEM

4 x ALUVISION PANELS | 1M x 1M  
 1 x ALUVISION CURVED PANEL | 1M CURVED

1 x CONVERSATION WALL | VARIOUS ALUVISION | SHIELD LOGO (INVENTORY) [SEE NASHVILLE DETAIL](#)

#### BANNERS

4 x LED BASED BANNERS | 22 LED PANELS + 2 CURVED LED PANELS PER BANNER  
 (88 LED PANELS TOTAL | 8 LED CURVED PANELS TOTAL)

#### FURNITURE PURCHASE / RENTAL

8 x CORT | OTTOMAN | MARCHE SWIVEL  
 1 x CORT | END TABLE | REGIS  
 2 x THEATER CHAIRS | TBD  
 2 x BARSTOOLS | BERTOIA STYLE | TDB (FORM DECOR / INVENTORY?)  
 1 x AFR | BAR TABLE | BLANCO SQUARE  
 1 x GAMING CHAIR | TBD

#### BRUMARK

(APPROX. 1000 SQ FT) | GRAY (VERIFY WITH NAT)  
 (APPROX. 492 SQ FT) | FLEX MAPLE WOOD

#### MONITORS

1 x MONITOR 98" | THEATER EXTERIOR  
 9 x MONITOR 49" CURVED | DEMOS  
 1 x MONITOR 65" | ACTIVATION BACK  
 3 x MONITOR 32" | CONVERSTAION WALL  
 1 x MONITOR 80" | CONVERSTAION WALL  
 1 x MONITOR 55" | CONVERSTAION WALL